

### Applications:

- SOHO products, such as paper sheets, cardboard, laser and inkjet labels, special papers, paper assortments, brochures, greetings cards, and the like

### Types of wrapping:

- Wrapping of individual products or assortments
- With or without cover sheet / envelope: Max. pack height 30 mm
- Packages completely sealed, open on the narrow side (sleeve), with header and eurohole or resealable flap

### Function:

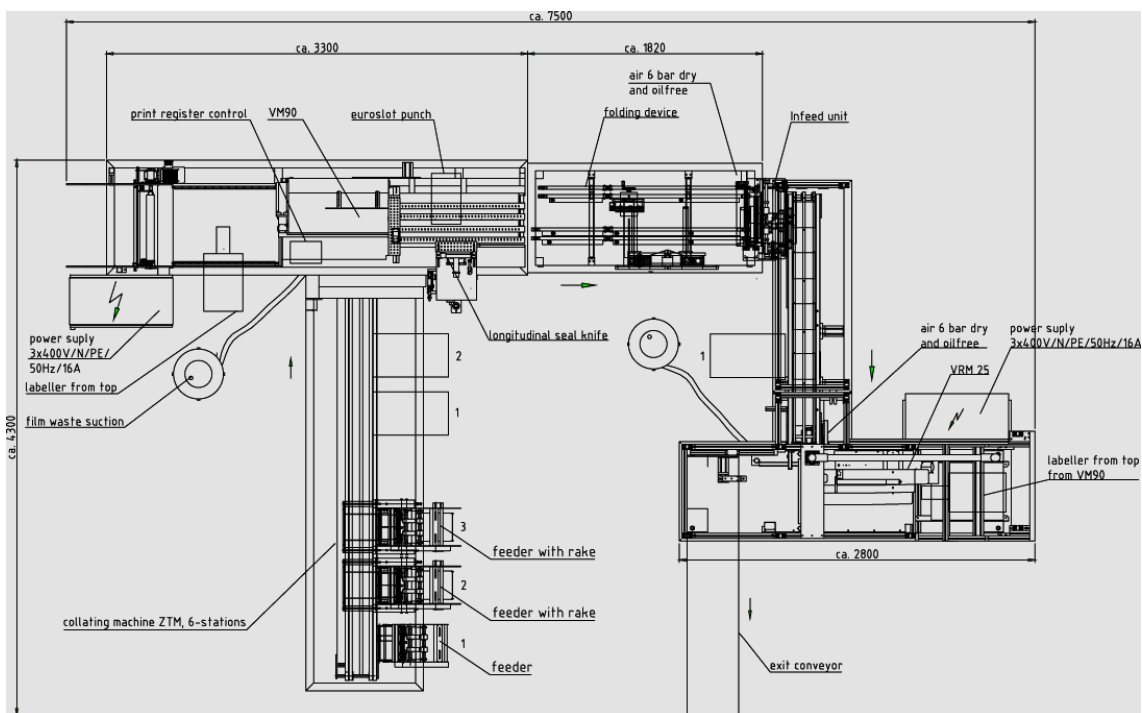
- Pulsed product feed to a semi-tubular film, 90° arrangement relative to the film feed direction.
- Collating the products / assortments on a collating machine equipped with feeders
- Electrically heated sealing knife for heat-sealing the packages, equipped with water-cooled holding-down devices for permanently good sealing quality.

### Programmable Logical Control:

- Operator guidance and status display by Graphical User Interface
- Operating keys for START, STOP, RESET and EMERGENCY STOP
- Operating mode MANUAL, JOG, CYCLE and AUTO
- Display or modification of operating parameters
- Operator language selectable in German or English, other languages on request
- Status diagnosis and fault messages
- Fault message indication by way of signal lamp and text messages
- Electric and electronic plug-type connections.

# VM 90 Technical Data (Standard configuration)

VM 90 GC	
• Format range:	Cards 105 x 148 mm to 225 x 315 mm Envelopes 110 x 153 mm to 212 x 317 mm
• Package height:	Max. 30 mm
• Performance (depending on product):	Up to 80 products/minute
• Film material:	Polypropylene (BOPP/CPP), 20 to 35 µm, folded film on roll, flat film on roll, (optionally film folding module) optional: Shrink foil
• Drive:	Infinitely adjustable geared servo motor
• Control:	PLC control, operator panel with graphical user interface
• Supply voltage / power consumption:	3 x 400 V / 50 Hz / approx. 6.4 kVA
• Pressure / air supply:	6 bar dry, oil-free air, connection ¼ ", air consumption approx. 470 l/min (incl. labelling unit)
• Dimensions (W x D x H):	7,500 x 4,300 x 1,850 mm (sample configuration see layout)
• Weight:	Approx. 3,350 kg (VM 90 with collating machine 6 stations, 3 AF-300)



01/2020 Technical modifications reserved

### Options:

Tear-off perforation:	With perforating knife for the tear-off perforation
Print register control:	For wrapping of pre-printed film
Film folding module:	Film folding module for folding flat film, optionally with header module for incorporating and sealing a header strip
Collating machine:	ZTM of 2 to 12 stations on request
Feeder on ZTM:	In-line (longitudinal feed) or transversely to direction of feed (lateral feed), on ZTM or with docking station
Scoring unit:	For applying a folding groove
Folding module:	For folding products previously provided with groove (in particular when equipped with scoring unit), for folded or plano cards
Flap closing module:	For processing packages with resealable flap
Adhesive tape applicator:	For applying an adhesive strip for resealable packages (in combination with flap closing module)
Eurohole punching unit:	For punching a eurohole (in combination with a header strip)
Air punching unit:	For punching an air hole into the film
Product discharge:	By flighted belt conveyor / By shingling conveyor
Banding machine:	Wrapping of card stacks with film banderole
Overwrapping:	Wrapping machine VRM 25 for overwrapping of product stacks
Shrink tunnel:	If shrink foil is used

### Special accessories:

Scanner / camera:	For detecting barcodes and serial numbers
Labelling device:	Different solutions on request
Printing on film:	Printer for printing on film