

# SonicSeal

## Technical Data

### Standard configuration

Card dimensions  
card: CR80 (ISO 7810),  
53.98 x 85.6 mm  
leaflet: 54-1 x 82+1 mm

Pack height  
1.00 mm (option: 1.60 mm)

Production speed  
up to 150 cards/minute  
(9.000 cards/hour)

Sealing process  
4-sided ultrasonic security  
sealing

Film specification  
4 GP film, 35 µm  
film roll size:  
inner diameter: 76 mm  
outer diameter: 280 mm  
center folded film:  
width: 115 mm x 115 mm  
single wound film (option):  
width: 230 mm

Drive  
servo-drive

Control  
IPC

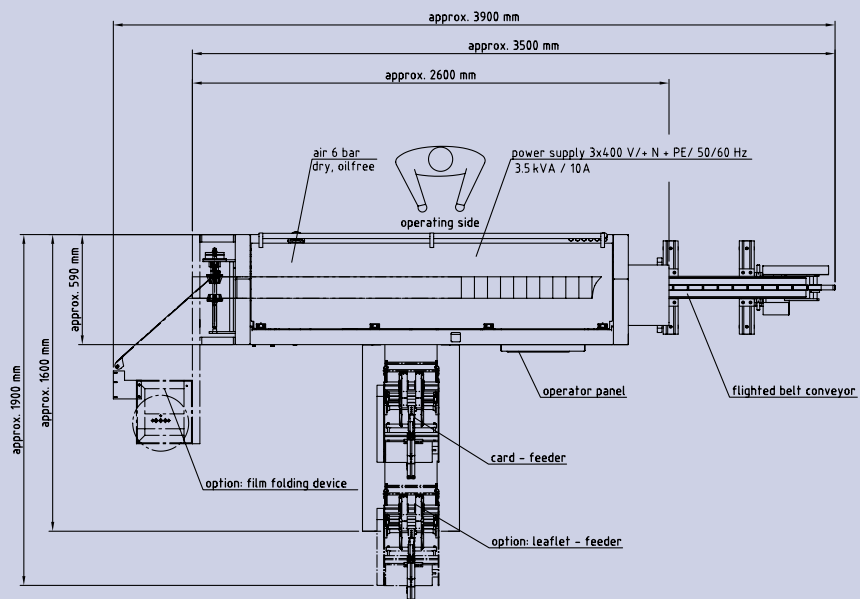
Electrical power  
requirements  
3 x 400 V/ +N, +PE /  
50/60 Hz  
3.5 kVA / 10 A

Air requirements  
6 bar (dry and oil free)  
consumption: 350 l/min

Ambient temperature /  
relative humidity  
15 – 25° C / 40 – 65%

Machine dimensions  
(LxWxH) / weight  
3.50 x 1.60 x 2.20 m /  
950 kg

10/2006 Technical modifications reserved



KÖRA → PACKMAT

KÖRA-PACKMAT  
Maschinenbau GmbH  
Gewerbestr. 4  
78667 Villingendorf  
Germany  
Phone +49 741 9283-0  
Fax +49 741 9283-30  
sales@koera-packmat.de  
www.koera-packmat.de

KORA-PACKMAT ASIA Pte Ltd  
3 International Business Park  
#04-32 Nordic European Centre  
Singapore 609927  
Singapore  
Phone +65 6890 6672  
Fax +65 6890 6674  
sales@kora-packmatasia.com.sg  
www.kora-packmatasia.com.sg

KORA-PACKMAT  
China Representative Office  
203, Block 27, Sunshine Holiday Inn  
Zhongxin Dongtai Park  
Eastcity District, Dongguan  
Guangdong PRC 523000  
China  
Phone +86 769 22342285  
Fax +86 769 22343259  
kora-kong@163.net

# SonicSeal

Card Wrapping System



Wrapping Systems

Greeting cards

Stationery

**Cards**

Optical media

Feeding Systems

Personalization Systems

## Compact

- small footprint

## Secure

- four-sided ultrasonic sealing

## Efficient

- excellent price-performance ratio

# The compact economy model for secure Card Wrapping

## ■ Economical and secure wrapping of cards

KÖRA-PACKMAT's SonicSeal is a very compact and cost efficient wrapping machine for the economical and secure wrapping of cards at speeds of up to 150 cards per minute.



### Excellent Price-Performance Ratio

- high productivity in 24/7 production
- tight wraps
- use of conventional PP film

### Operator Friendly Design

- swivel-mounted operator panel with touch screen

### Security Sealing

- four-sided ultrasonic sealing

### Proven Design Competence

- more than forty years of experience in designing and manufacturing high quality wrapping machines

### Comprehensive Customer Support

- highly qualified field service engineers
- international sales and support offices
- fast shipment of spares and consumables

### Product Format

SonicSeal wrapping machines handle standard products in CR80 format such as pre-paid phone cards, smart cards, internet cards, SIM cards, and leaflets. Machines for handling other sized products are available on request.

### Product Wrapping

SonicSeal wrapping machines can wrap single packs or linked packs; a maximum of twenty-five packs can be in a linked pack.

### Machine Configuration

SonicSeal with a wide range of selectable options has a small footprint. Adding a personalization system, a camera monitoring system, a labeller, a printer, and an overwrapping machine transforms this machine into a complete system for personalizing, wrapping and overwrapping products.

## Standard Features



### Card Feeder

In-house developed and produced high-speed servo-driven feeder feeds cards reliably and accurately.



### Sealing Stamps

Easily exchangeable sealing stamps create an intricate pattern in the seal during the ultrasonic sealing process. The pattern can be generic or job specific for increased security.



### Operator Panel

An operator friendly operator panel with touch screen is mounted centrally to provide convenient access from either side of the machine.

## Options

### Leaflet Feeder

Second feeder for feeding leaflets reliably and accurately.

### Film Folding Device

A film folding device folds single wound film to center folded film.

### Print Registration System

Wrapping products with pre-printed film increases product security. A print registration controller detects the registration marks and aligns film and product prior

to sealing to ensure that a printed image is correctly positioned.

### Labeller

A label can be applied containing fixed data, such as customer name, logo, number of cards per pack, value per card, and variable data such as date, first and last serial number of the cards in the pack, box number and shipper box number.

### Camera Monitoring System

The system reads one number or a barcode on the cards and compares these with data in a data file before it sends appropriate data to a printer.

### Personalization System Print S

Print S is designed for in-line operation with a SonicSeal. Print S is a card personalization system that comprises an ink-jet printer, scratch-off labeler or hot

foil applicator, a camera verification system and different ejection stations.

### Overwrapping machines

An overwrapping machine can be linked to a SonicSeal; customers can select from a wide range of various overwrapping machines with a choice of overwrapping styles.